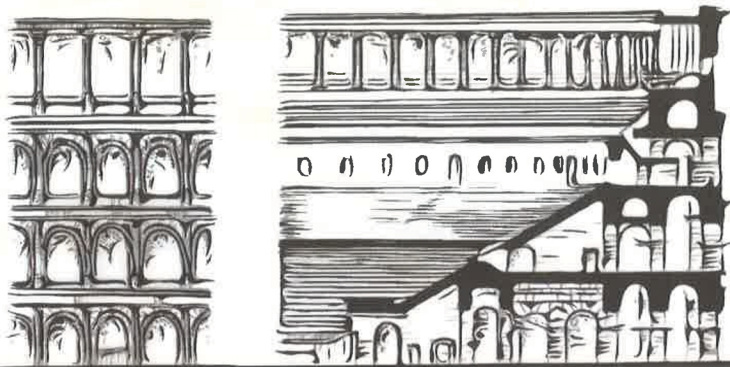


WHILE OBSERVING THE VITRUVIAN CITY, THE BUILT-UP SPACES SEEM TO DESCRIBE THE QUALITIES OF AN ARCHITECTURE THAT SEEKS TO BE IN A DECENT RELATIONSHIP WITH ANOTHER. IN IT, THREE DISTINCT REQUIREMENTS ARE OF GREAT IMPORTANCE.

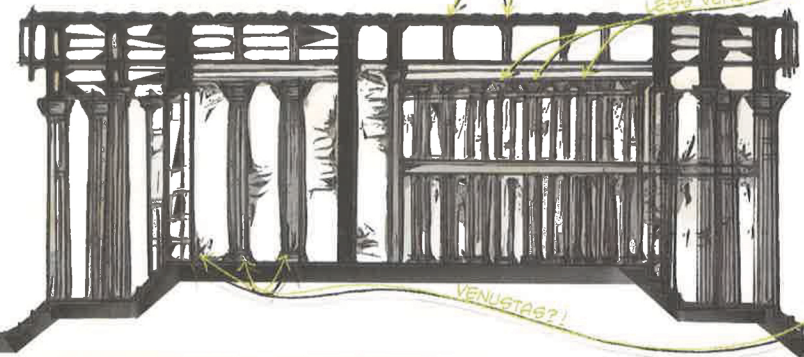
-FIRMITAS, OR STRENGTH: A BUILDING HAS TO BE STATIC WHILE FACING DIFFICULTIES, ABLE TO CONSTRUCT TRUST AND SUPPORT AND HAVE A RELATIONSHIP ROOTED IN CAREFULLY CHOSEN MATERIALS.

-UTILITAS, WHERE BUILDINGS SHOULD ARRANGE EACH OTHER'S SPACES IN A CONVENIENT WAY, SO THAT THEY CAN ACHIEVE A SUCCESSFULLY FUNCTIONAL RELATIONSHIP.

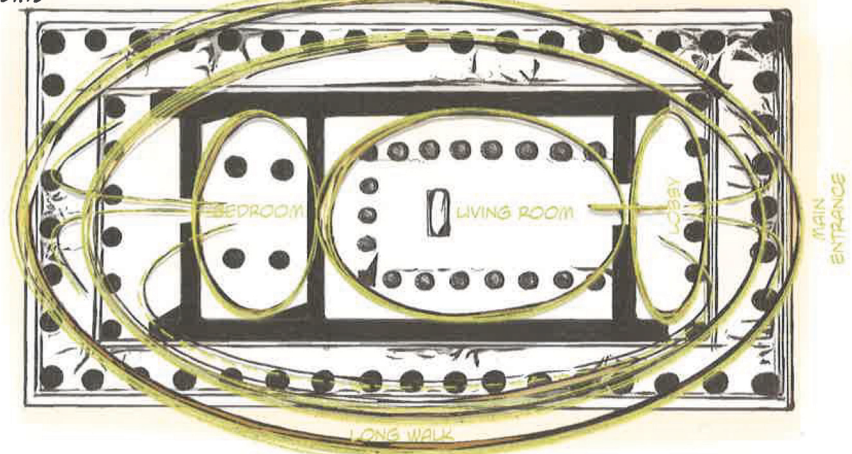
-VENUSTAS, WHERE ELEGANCE, PLEASING APPEARANCES AND PROPORTIONS ARE VALUED. HERE, PROPORTION IS ABOUT THE RELATIONSHIP BETWEEN THE PARTS AND THE WHOLE.



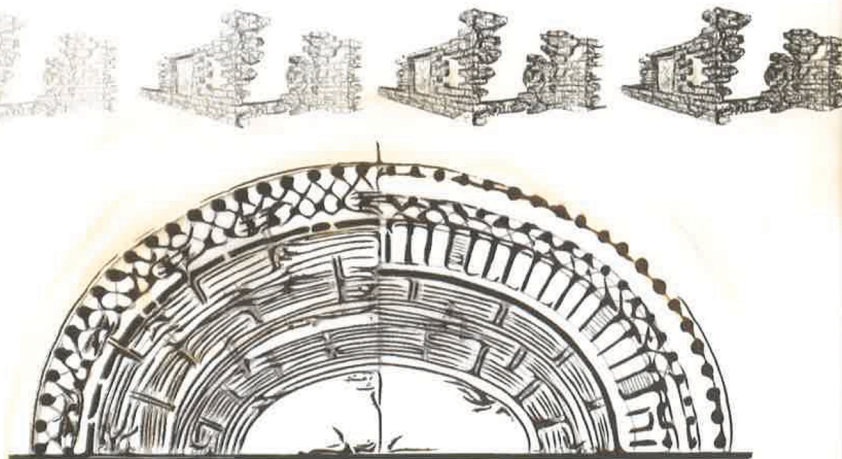
FIRMITAS



VENUSTAS



U-T-I-L-I-T-A-S



THE COLOSSEUM OF ROME \*